

Specifications

Camlocks are often referred to as Cam and Groove Couplings. This is because they are engineered with grooves that allow the various styles to fit together creating a tight seal. Their simple design and easy operation make them very popular. Camlocks are connected by simply opening the coupler arms and inserting the adapter into the coupler. As the arms are pushed down to the sides, the two connectors are forced tightly together creating the bonded seal on an internal gasket.

Camlocks come in a variety of materials: aluminum, stainless steel, brass, polypropylene.

Standards

1.MIL A-A-59326

Cam & Groove couplings are made in compliance with A-A-59326 (old version called MIL-C-27487) specification.

2.EN14420-7(DIN2828)

The European standard EN 14420-7:2004 replaces DIN 2828, which was applied to cam & groove couplings manufactured to A-A-59326A. A flat thread seal has been added to the female threaded parts, and a smooth hose shank has been added for assembly with DIN 2817 safety clamps.

Size

Aluminum: 1/2" to 8"

Stainless steel: 1/2" to 6"

Brass: 1/2" to 4"

PP: 1/2" to 4"

Material

1. Stainless steel AISI316/1.4408 by investment casting

2. Brass CW614N by forging

3. Aluminium by gravity casting

4. Polypropylene



Features

1. Handles are made of stainless steel AISI 304 as a standard.

2. Camlocks are capable of transporting liquids, solids and gases, except liquid gas and steam.

3. Coupling with multi-serrated hose shank & collar are available on customer's request.



Seal for Camlock

Camlock	Flat gasket seal	Thread gasket
Aluminum	NBR	NBR
Stainless steel	NBR	PTFE
Brass	NBR	PU
PP	EPDM	NBR

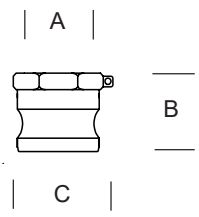
Thread for Camlock

Camlock	Male	Female	Standard
A-A-59326	NPT	NPT	NPT according to ANSI/ASME B1.20.1
EN 14420-7	BSPT	BSP	BSPT according to EN 10226-1
DIN 2828	BSPT	BSP	BSP according to EN ISO 228-1



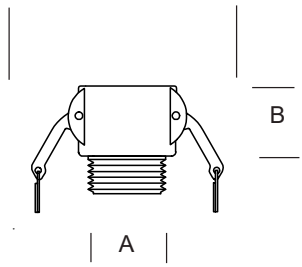
General Dimensions

Adapter 'A'



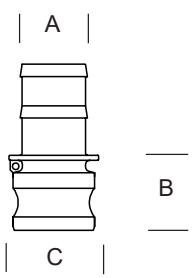
SIZES	A	B	C
3/4"	3/4"	1-1/2	1-1/2
1"	1"	1-7/8	1-3/4
1-1/4"	1-1/4"	2-1/8	2-1/8
1-1/2"	1-1/2"	2-1/4	2-1/2
2"	2"	2-1/2	2-7/8
2-1/2"	2-1/2"	2-3/4	3-1/2
3"	3"	2-7/8	4-1/8
4"	4"	3-3/8	5-1/4
5"	5"	3-3/8	6-1/2
6"	6"	3-7/8	7-3/8
8"	8"	5-1/4	10"

Coupler 'B' C



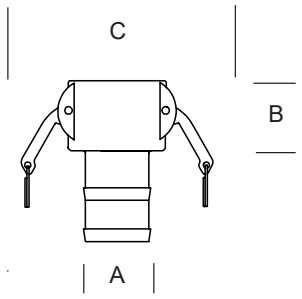
SIZES	A	B	C
3/4"	3/4"	1-3/8	4-1/2
1"	1"	1-5/8	5-1/8
1-1/4"	1-1/4"	1-3/4	6-7/8
1-1/2"	1-1/2"	1-7/8	7-1/4
2"	2"	2-1/8	7-5/8
2-1/2"	2-1/2"	2-1/4	8-1/8
3"	3"	2-3/8	9-7/8
4"	4"	2-3/8	11"
5"	5"	2-1/2	12"
6"	6"	2-5/8	16-1/4
8"	8"	4-1/8	18"

Adapter 'E'



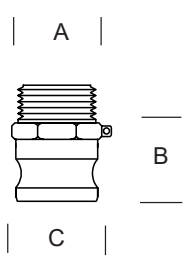
SIZES	A	B	C
3/4"	3/4"	1-3/8	1-1/4
1"	1"	1-3/4	1-5/8
1-1/4"	1-1/4"	2"	2"
1-1/2"	1-1/2"	2-1/4	2-3/8
2"	2"	2-1/4	3"
2-1/2"	2-1/2"	2-1/2	3-3/8
3"	3"	2-1/2	4-1/8
4"	4"	4-5/8	5-1/8
5"	5"	3"	6-1/4
6"	6"	3-1/4	7-3/8
8"	8"	3-7/8	10-3/8

Coupler 'C'



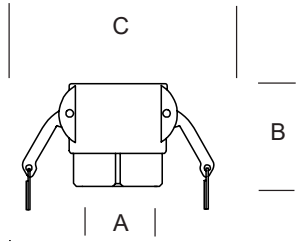
SIZES	A	B	C
3/4"	3/4"	1-3/8	4-1/2
1"	1"	1-5/8	5-1/8
1-1/4"	1-1/4"	1-3/4	6-7/8
1-1/2"	1-1/2"	1-7/8	7-1/4
2"	2"	2-1/8	7-5/8
2-1/2"	2-1/2"	2-1/4	8-1/8
3"	3"	2-3/8	9-7/8
4"	4"	2-3/8	11"
5"	5"	2-1/2	12"
6"	6"	2-5/8	16-1/4
8"	8"	4-1/8	18"

Adapter 'F'



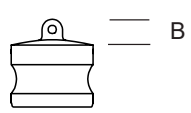
SIZES	A	B	C
3/4"	3/4"	1-5/8	1-5/8
1"	1"	1-7/8	1-3/4
1-1/4"	1-1/4"	2-1/4	2-1/8
1-1/2"	1-1/2"	2-1/4	2-3/8
2"	2"	2-1/2	2-7/8
2-1/2"	2-1/2"	2-3/4	3-1/2
3"	3"	2-7/8	4-1/8
4"	4"	3-3/8	5-1/4
5"	5"	3-1/2	6-1/8
6"	6"	3-1/2	8-1/8
8"	8"	5-1/4	10"

Coupler 'D'



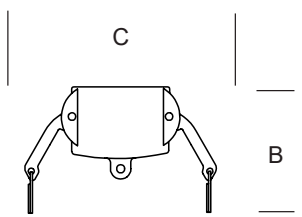
SIZES	A	B	C
3/4"	3/4"	2-1/8	4-1/2
1"	1"	2-5/8	5-1/8
1-1/4"	1-1/4"	3"	6-7/8
1-1/2"	1-1/2"	3"	7-1/4
2"	2"	3"	7-5/8
2-1/2"	2-1/2"	3-3/8	8-1/8
3"	3"	3-1/2	9-7/8
4"	4"	4"	11"
5"	5"	4-1/2	12"
6"	6"	5-1/2	16-1/4
8"	8"	6-1/4	18"

Adapter 'DP'



SIZES	A	B	C
3/4"	—	1/2	—
1"	—	3/8	—
1-1/4"	—	3/8	—
1-1/2"	—	1/2	—
2"	—	5/8	—
2-1/2"	—	5/8	—
3"	—	5/8	—
4"	—	5/8	—
5"	—	3/4	—
6"	—	3/4	—
8"	—	1"	—

Coupler 'DC'



SIZES	A	B	C
3/4"	—	1-7/8	4-1/2
1"	—	2-1/2	5-1/8
1-1/4"	—	3-1/8	6-7/8
1-1/2"	—	3-1/8	7-1/4
2"	—	3-1/4	7-5/8
2-1/2"	—	3-3/8	8-1/8
3"	—	3-3/4	9-7/8
4"	—	3-7/8	11"
5"	—	4-1/8	12"
6"	—	5-3/8	16-1/4
8"	—	6-1/4	18"

A = Hose Shank or Pipe Thread size B = Length exposed from Hose or Pipe
 C = Maximum Outside Diameter. Adapters without chain tab. Couplers with handles extended and without finger rings.

MIL A-A-59326




	Name	Size	Code	
A 	A050AL	1/2"	K1041001	
	A075AL	3/4"	K1041004	
	A100AL	1"	K1041007	
	A125AL	1 1/4"	K1041010	
	A150AL	1 1/2"	K1041013	
	A200AL	2"	K1041016	
	A250AL	2 1/2"	K1041019	
	A300AL	3"	K1041022	
	A400AL	4"	K1041025	
	A500AL	5"	K1041028	
	A600AL	6"	K1041031	
	A800AL	8"	K1041045	
	A050SS	1/2"	K1021001	
	A075SS	3/4"	K1021004	
	A100SS	1"	K1021007	
	A125SS	1 1/4"	K1021010	
	A150SS	1 1/2"	K1021013	
	A200SS	2"	K1021016	
	A250SS	2 1/2"	K1021019	
	A300SS	3"	K1021022	
	A400SS	4"	K1021025	
	A500SS	5"	K1021028	
	A600SS	6"	K1021031	
		A050BR	1/2"	K1061001
A075BR		3/4"	K1061004	
A100BR		1"	K1061007	
A125BR		1 1/4"	K1061010	
A150BR		1 1/2"	K1061013	
A200BR		2"	K1061016	
A250BR		2 1/2"	K1061019	
A300BR		3"	K1061022	
A400BR		4"	K1061025	
		A050PP	1/2"	K1071001
		A075PP	3/4"	K1071004
		A100PP	1"	K1071007
	A125PP	1 1/4"	K1071010	
	A150PP	1 1/2"	K1071013	
	A200PP	2"	K1071016	
	A250PP	2 1/2"	K1071019	
	A300PP	3"	K1071022	
A400PP	4"	K1071025		

Type A with BSPT thread on request available



MIL A-A-59326

	Name	Size	Code
	B050AL	1/2"	K1042001
	B075AL	3/4"	K1042004
	B100AL	1"	K1042007
	B125AL	1 1/4"	K1042010
	B150AL	1 1/2"	K1042013
	B200AL	2"	K1042016
	B250AL	2 1/2"	K1042019
	B300AL	3"	K1042022
	B400AL	4"	K1042025
	B500AL	5"	K1042028
	B600AL	6"	K1042031
	B800AL	8"	K1042034
	B050SS	1/2"	K1022001
	B075SS	3/4"	K1022004
	B100SS	1"	K1022007
	B125SS	1 1/4"	K1022010
	B150SS	1 1/2"	K1022013
	B200SS	2"	K1022016
	B250SS	2 1/2"	K1022019
	B300SS	3"	K1022022
	B400SS	4"	K1022025
	B500SS	5"	K1022028
	B600SS	6"	K1022031
	B050BR	1/2"	K1062001
	B075BR	3/4"	K1062004
	B100BR	1"	K1062007
	B125BR	1 1/4"	K1062010
	B150BR	1 1/2"	K1062013
	B200BR	2"	K1062016
	B250BR	2 1/2"	K1062019
	B300BR	3"	K1062022
	B400BR	4"	K1062025
		B050PP	1/2"
B075PP		3/4"	K1072004
B100PP		1"	K1072007
B125PP		1 1/4"	K1072010
B150PP		1 1/2"	K1072013
B200PP		2"	K1072016
B250PP		2 1/2"	K1072019
B300PP	3"	K1072022	
B400PP	4"	K1072025	

MIL A-A-59326

	Name	Size	Code
C 	C050AL	1/2"	K1043001
	C075AL	3/4"	K1043002
	C100AL	1"	K1043003
	C125AL	1 1/4"	K1043004
	C150AL	1 1/2"	K1043005
	C200AL	2"	K1043006
	C250AL	2 1/2"	K1043007
	C300AL	3"	K1043008
	C400AL	4"	K1043009
	C500AL	5"	K1043010
	C600AL	6"	K1043011
	C800AL	8"	K1043023
	C050SS	1/2"	K1023001
	C075SS	3/4"	K1023002
	C100SS	1"	K1023003
	C125SS	1 1/4"	K1023004
	C150SS	1 1/2"	K1023005
	C200SS	2"	K1023006
	C250SS	2 1/2"	K1023007
	C300SS	3"	K1023008
	C400SS	4"	K1023009
	C500SS	5"	K1023010
	C600SS	6"	K1023011
	C050BR	1/2"	K1063001
	C075BR	3/4"	K1063002
	C100BR	1"	K1063003
	C125BR	1 1/4"	K1063004
	C150BR	1 1/2"	K1063005
	C200BR	2"	K1063006
	C250BR	2 1/2"	K1063007
	C300BR	3"	K1063008
	C400BR	4"	K1063009
		C050PP	1/2"
C075PP		3/4"	K1073002
C100PP		1"	K1073003
C125PP		1 1/4"	K1073004
C150PP		1 1/2"	K1073005
C200PP		2"	K1073006
C250PP		2 1/2"	K1073007
C300PP		3"	K1073008
C400PP		4"	K1073009

MIL A-A-59326

	Name	Size	Code	
	D050AL	1/2"	K1044001	
	D075AL	3/4"	K1044004	
	D100AL	1"	K1044007	
	D125AL	1 1/4"	K1044010	
	D150AL	1 1/2"	K1044013	
	D200AL	2"	K1044016	
	D250AL	2 1/2"	K1044019	
	D300AL	3"	K1044022	
	D400AL	4"	K1044025	
	D500AL	5"	K1044028	
	D600AL	6"	K1044031	
	D800AL	8"	K1044035	
	D050SS	1/2"	K1024001	
	D075SS	3/4"	K1024004	
	D100SS	1"	K1024007	
	D125SS	1 1/4"	K1024010	
	D150SS	1 1/2"	K1024013	
	D200SS	2"	K1024016	
	D250SS	2 1/2"	K1024019	
	D300SS	3"	K1024022	
	D400SS	4"	K1024025	
	D500SS	5"	K1024028	
	D600SS	6"	K1024031	
		D050BR	1/2"	K1064001
D075BR		3/4"	K1064004	
D100BR		1"	K1064007	
D125BR		1 1/4"	K1064010	
D150BR		1 1/2"	K1064013	
D200BR		2"	K1064016	
D250BR		2 1/2"	K1064019	
D300BR		3"	K1064022	
D400BR		4"	K1064025	
		D050PP	1/2"	K1074001
		D075PP	3/4"	K1074004
		D100PP	1"	K1074007
	D125PP	1 1/4"	K1074010	
	D150PP	1 1/2"	K1074013	
	D200PP	2"	K1074016	
	D250PP	2 1/2"	K1074019	
	D300PP	3"	K1074022	
D400PP	4"	K1074025		

Type D with BSPT thread on request available

MIL A-A-59326

	Name	Size	Code	
	E050AL	1/2"	K1045001	
	E075AL	3/4"	K1045002	
	E100AL	1"	K1045003	
	E125AL	1 1/4"	K1045004	
	E150AL	1 1/2"	K1045005	
	E200AL	2"	K1045006	
	E250AL	2 1/2"	K1045007	
	E300AL	3"	K1045008	
	E400AL	4"	K1045009	
	E500AL	5"	K1045010	
	E600AL	6"	K1045011	
	E050SS	1/2"	K1025001	
	E075SS	3/4"	K1025002	
	E100SS	1"	K1025003	
	E125SS	1 1/4"	K1025004	
	E150SS	1 1/2"	K1025005	
	E200SS	2"	K1025006	
	E250SS	2 1/2"	K1025007	
	E300SS	3"	K1025008	
	E400SS	4"	K1025009	
	E500SS	5"	K1025010	
	E600SS	6"	K1025011	
	E050BR	1/2"	K1065001	
	E075BR	3/4"	K1065002	
	E100BR	1"	K1065003	
	E125BR	1 1/4"	K1065004	
	E150BR	1 1/2"	K1065005	
	E200BR	2"	K1065006	
	E250BR	2 1/2"	K1065007	
	E300BR	3"	K1065008	
	E400BR	4"	K1065009	
		E050PP	1/2"	K1075001
		E075PP	3/4"	K1075002
E100PP		1"	K1075003	
E125PP		1 1/4"	K1075004	
E150PP		1 1/2"	K1075005	
E200PP		2"	K1075006	
E250PP		2 1/2"	K1075007	
E300PP		3"	K1075008	
E400PP		4"	K1075009	

MIL A-A-59326

	Name	Size	Code	
	F050AL	1/2"	K1046001	
	F075AL	3/4"	K1046004	
	F100AL	1"	K1046007	
	F125AL	1 1/4"	K1046010	
	F150AL	1 1/2"	K1046013	
	F200AL	2"	K1046016	
	F250AL	2 1/2"	K1046019	
	F300AL	3"	K1046022	
	F400AL	4"	K1046025	
	F500AL	5"	K1046028	
	F600AL	6"	K1046031	
	F800AL	8"	K1046034	
	F050SS	1/2"	K1026001	
	F075SS	3/4"	K1026004	
	F100SS	1"	K1026007	
	F125SS	1 1/4"	K1026010	
	F150SS	1 1/2"	K1026013	
	F200SS	2"	K1026016	
	F250SS	2 1/2"	K1026019	
	F300SS	3"	K1026022	
	F400SS	4"	K1026025	
	F500SS	5"	K1026028	
	F600SS	6"	K1026031	
		F050BR	1/2"	K1066001
F075BR		3/4"	K1066004	
F100BR		1"	K1066007	
F125BR		1 1/4"	K1066010	
F150BR		1 1/2"	K1066013	
F200BR		2"	K1066016	
F250BR		2 1/2"	K1066019	
F300BR		3"	K1066022	
F400BR		4"	K1066025	
		F050PP	1/2"	K1076001
		F075PP	3/4"	K1076004
		F100PP	1"	K1076007
	F125PP	1 1/4"	K1076010	
	F150PP	1 1/2"	K1076013	
	F200PP	2"	K1076016	
	F250PP	2 1/2"	K1076019	
	F300PP	3"	K1076022	
F400PP	4"	K1076025		

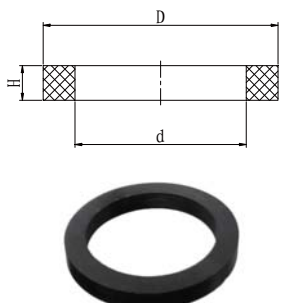
MIL / EN / DIN

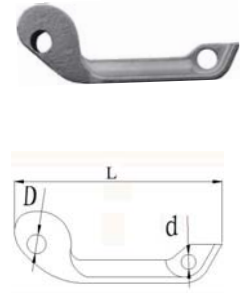
	Name	Size	Code	
	DC050AL	1/2"	K1048001	
	DC075AL	3/4"	K1048002	
	DC100AL	1"	K1048003	
	DC125AL	1 1/4"	K1048004	
	DC150AL	1 1/2"	K1048005	
	DC200AL	2"	K1048006	
	DC250AL	2 1/2"	K1048007	
	DC300AL	3"	K1048008	
	DC400AL	4"	K1048009	
	DC500AL	5"	K1048010	
	DC600AL	6"	K1048011	
	DC800AL	8"	K1048012	
	DC050SS	1/2"	K1028001	
	DC075SS	3/4"	K1028002	
	DC100SS	1"	K1028003	
	DC125SS	1 1/4"	K1028004	
	DC150SS	1 1/2"	K1028005	
	DC200SS	2"	K1028006	
	DC250SS	2 1/2"	K1028007	
	DC300SS	3"	K1028008	
	DC400SS	4"	K1028009	
	DC500SS	5"	K1028010	
	DC600SS	6"	K1028011	
		DC050BR	1/2"	K1068001
DC075BR		3/4"	K1068002	
DC100BR		1"	K1068003	
DC125BR		1 1/4"	K1068004	
DC150BR		1 1/2"	K1068005	
DC200BR		2"	K1068006	
DC250BR		2 1/2"	K1068007	
DC300BR		3"	K1068008	
DC400BR		4"	K1068009	
		DC050PP	1/2"	K1078001
		DC075PP	3/4"	K1078002
		DC100PP	1"	K1078003
	DC125PP	1 1/4"	K1078004	
	DC150PP	1 1/2"	K1078005	
	DC200PP	2"	K1078006	
	DC250PP	2 1/2"	K1078007	
	DC300PP	3"	K1078008	
	DC400PP	4"	K1078009	

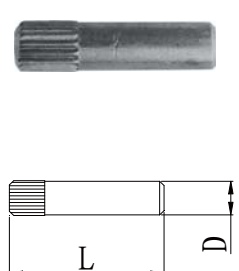
MIL / EN / DIN

	Name	Size	Code	
	DP050AL	1/2"	K1047001	
	DP075AL	3/4"	K1047002	
	DP100AL	1"	K1047003	
	DP125AL	1 1/4"	K1047004	
	DP150AL	1 1/2"	K1047005	
	DP200AL	2"	K1047006	
	DP250AL	2 1/2"	K1047007	
	DP300AL	3"	K1047008	
	DP400AL	4"	K1047009	
	DP500AL	5"	K1047010	
	DP600AL	6"	K1047011	
	DP800AL	8"	K1047012	
	DP050SS	1/2"	K1027001	
	DP075SS	3/4"	K1027002	
	DP100SS	1"	K1027003	
	DP125SS	1 1/4"	K1027004	
	DP150SS	1 1/2"	K1027005	
	DP200SS	2"	K1027006	
	DP250SS	2 1/2"	K1027007	
	DP300SS	3"	K1027008	
	DP400SS	4"	K1027009	
	DP500SS	5"	K1027010	
	DP600SS	6"	K1027011	
		DP050BR	1/2"	K1067001
DP075BR		3/4"	K1067002	
DP100BR		1"	K1067003	
DP125BR		1 1/4"	K1067004	
DP150BR		1 1/2"	K1067005	
DP200BR		2"	K1067006	
DP250BR		2 1/2"	K1067007	
DP300BR		3"	K1067008	
DP400BR		4"	K1067009	
		DP050PP	1/2"	K1077001
		DP075PP	3/4"	K1077002
		DP100PP	1"	K1077003
	DP125PP	1 1/4"	K1077004	
	DP150PP	1 1/2"	K1077005	
	DP200PP	2"	K1077006	
	DP250PP	2 1/2"	K1077007	
	DP300PP	3"	K1077008	
	DP400PP	4"	K1077009	

Accessories

	Name	Code	ΦD mm	Φd mm	H mm
Flat gasket 	CAM15NBR	K1090017-15	26	16	4
	CAM20NBR	K1090017-20	35	22	5.5
	CAM25NBR	K1090017-25	40	27	6.4
	CAM32NBR	K1090017-32	50	35	6.4
	CAM40NBR	K1090017-40	56	41	6.4
	CAM50NBR	K1090017-50	67	51	6.4
	CAM65NBR	K1090017-65	80	60	6.4
	CAM80NBR	K1090017-80	95	76	6.4
	CAM100NBR	K1090017-100	124	102	6.4

	Name	Code	ΦD mm	Φd mm	L mm
Handle 	HDCM15SS	K1009009	4.1	3.5	44
	HDCM20SS	K1009009	4.1	3.5	44
	HDCM25SS	K1009005	5.5	4.0	48
	HDCM32SS	K1009006	6.4	5.0	68
	HDCM40SS	K1009006	6.4	5.0	68
	HDCM50SS	K1009006	6.4	5.0	68
	HDCM65SS	K1009006	6.4	5.0	68
	HDCM80SS	K1009002	8.1	6.0	78
	HDCM100SS	K1009002	8.1	6.0	78

	Name	Code	ΦD mm	L mm
Pin 	PICM15SS	K1090021	4.0	18.5
	PICM20SS	K1090021	4.0	18.5
	PICM25SS	K1090018	5.4	24.0
	PICM32SS	K1090019	6.3	28.0
	PICM40SS	K1090019	6.3	28.0
	PICM50SS	K1090019	6.3	28.0
	PICM65SS	K1090019	6.3	28.0
	PICM80SS	K1090002	8.0	34.0
	PICM100SS	K1090002	8.0	34.0



Name	Code
RINGSS	K1090020



PINSS	K1090025
-------	----------